



**HETTY Enterprise Trust Time For You**  
Hoole Lane  
Hoole  
Chester  
CH2 3HB

**01244 500 908**

**Manager**  
**Mrs D Bowes**

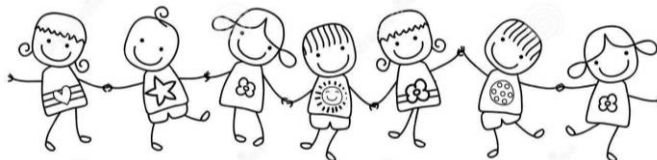
Dear Parents/Carers

**HETTY will be offering holiday child care for October half term including the INSET training day:**

**Friday 25<sup>th</sup> October 2019 (INSET day)**

**Monday 28<sup>th</sup> October – Friday 1<sup>st</sup> November 2019 (half term)**

**There will be various activities taking place, please let us know if your child has a particular interest.**



Your child will require a packed lunch if booked in over lunch time.

Holiday care is available, subject to sufficient bookings being received. Please book early to avoid us closing due to low numbers.

If you wish to book a place for your child, please complete the form overleaf and return to HETTY before **Friday 11<sup>th</sup> October 2019**

Once bookings have been received and places have been confirmed, parent/carers are committed to pay for those sessions, even if your child does not attend on the day as running costs will need to be met.

Please book early to ensure your place as we are not always able to accommodate last minute bookings due to staffing ratios – it is therefore important that we have your requested dates beforehand.

Many thanks for all your continued support.

*Dennis Bowes*

**HETTY manager**

Date	Breakfast 7.45-8.45 £4.00	Morning session Am 8.45-11.45 £12	Lunch club 11.45-12.45 £4.50	Afternoon Session PM 12.45-3.25 £12	Full day 7.45-5.45 £36.00	AM Half day 7.45-1.00 £18.00	PM Half day 1-5.45 £18.00	School Day 8.45-3.25 £25.50	After school 3.25-5.45 £10.00
Friday 25 <sup>th</sup> October									
Monday 28 <sup>th</sup> October									
Tuesday 29 <sup>th</sup> October									
Wednesday 30 <sup>th</sup> October									
Thursday 31 <sup>st</sup> October									
Friday 1 <sup>st</sup> November									

**Please tick which sessions are required**

Name of child \_\_\_\_\_ Year \_\_\_\_\_

Parent/carer's name \_\_\_\_\_

Contact phone numbers \_\_\_\_\_

Address \_\_\_\_\_

Does your child have any medical problems yes/no?

If yes please give details \_\_\_\_\_

Permission to take your child out in the local community of Hoole.

Parent/carer's signature \_\_\_\_\_

Discount 10% for 3 days  
 20% for 5 days  
 5% second child